

# MEDWAY OPEN STUDIOS

& ARTS FESTIVAL  
SAT 15 - SUN 23 JULY 2017

[www.medwayopenstudios.co.uk](http://www.medwayopenstudios.co.uk)



**AWARD-WINNING ART VENUE,  
GALLERY & TEAROOM IN  
CHATHAM. REGULAR EVENTS  
AND WORKSHOPS; RIVERSIDE  
STUDIOS & OFFICE SPACE.**

**SUN PIER, MEDWAY STREET,  
CHATHAM ME4 4HF**

**[SUNPIERHOUSE.CO.UK](http://SUNPIERHOUSE.CO.UK)**

**INTRA**

**MEDWAY BASED ARTS VENUE  
AND CHARITY, HOSTING  
CREATIVE EVENTS, CLASSES,  
ACTIVITIES & STUDIOS,  
& PROVIDING ACCESS TO  
SPECIALIST ARTS EQUIPMENT  
& FACILITIES.**

**337 HIGH ST, ROCHESTER, KENT**

**[INTRAARTS.ORG](http://INTRAARTS.ORG)**



**A MONTHLY POCKET GUIDE  
OFFERING YOU A SELECTION OF  
WHAT'S ON IN MEDWAY AND  
GRAVESEND. IT HAS PLENTY  
OF IDEAS TO KEEP YOU BUSY  
AND ENTERTAINED EACH  
MONTH! AVAILABLE IN PRINT  
OR TO DOWNLOAD.**

** WHATS ON MEDWAY/GRAVESEND**

**[WHATSON-MG.CO.UK](http://WHATSON-MG.CO.UK)**

# HELLO!

*It's time to explore the hidden creative work spaces and secret studios of Medway. Take part in fun creative activities & events at local arts venues, view exhibitions, talk to artists, buy art & crafts, and see first-hand the array of artistic talent and opportunities in this impressively creative area of Kent. This is the sixth year of the Medway Open Studios & Arts Festival, and we're proud to have 23 venues taking part.*

 /MedwayOpenStudios  - @mwayopenstudios 

heather@medwayopenstudios.co.uk

**OVER  
100  
ARTISTS  
ACROSS  
23  
VENUES**

## Prize draw!

**A simple competition to win £100 to spend with your favourite Medway artist**

*Visit six or more venues, ask a host artist to sign a box below, then return this page to Medway Open Studios, c/o Sun Pier House, Sun Pier, Medway Street, Chatham, Kent, ME4 4HF. Entries will be entered into a prize draw to win £100 to spend with any artist from the festival. Deadline for entries is Monday 1 August.*

Artist/ venue:

Signed:

Artist/ venue:

Signed:

Artist/ venue:

Signed:

Artist/ venue:

Signed:

Artist/ venue:

Signed:

Artist/ venue:

Signed:

**Your contact details**

Name:

Address:

Telephone:

Email:

How did you learn about the Medway Open Studios & Arts Festival?

What did you enjoy the most?



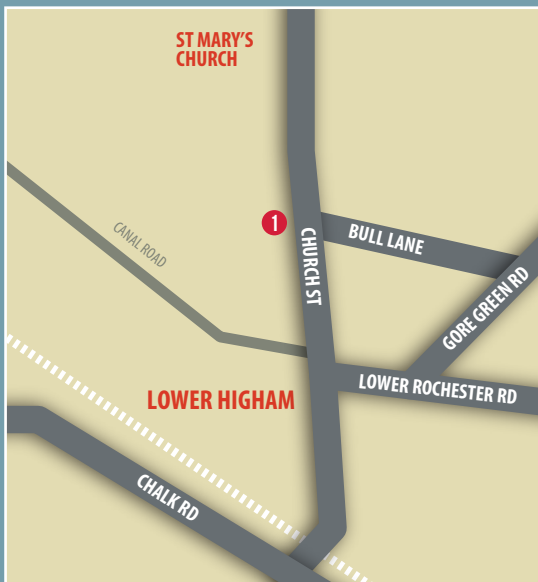
# The Venues

There are 23 venues taking part in this year's Open Studios. Each venue has its own opening times and access. Please check the listings before visiting and contact the venue in advance if you have any questions. To view the digital Google Map of all the venues visit the website [www.medwayopenstudios.co.uk](http://www.medwayopenstudios.co.uk)



Maps are not to scale and are a guideline only

# MEDWAY OPEN STUDIOS



To view the digital Google map visit the website –  
[www.medwayopenstudios.co.uk](http://www.medwayopenstudios.co.uk)



NOT TO SCALE!



#### MAP 1

### FIONA SPIRALS

The Crows Nest Studio, 4 Hope Terrace, Church Street,  
Higham, ME3 7LHH

Ripping Landscapes collages made from rock climbing magazines exciting new work & demos. My style is unique you might think they were paintings! Originals, prints & cards for sale. It's worth the trip to Higham to see them in the flesh. Come on you know you want to!

Sat 22 12pm - 6pm, Sun 23 12pm - 6pm

✉ [fi@fionaspirals.co.uk](mailto:fi@fionaspirals.co.uk)

[www.fionaspirals.co.uk](http://www.fionaspirals.co.uk) ☎ 07900 473 043

Wheelchair accessible? No



#### MAP 2

### LINDA J. SMITH

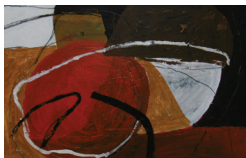
9 Weston Road, Strood, ME2 3EZ

Textures, contrasting tones and shapes enhance the process of creating compositions, which I find in visited landscapes and seascapes. I stretch the figurative appropriate to my responses, often using mixed media.

Sat 15 10am - 5pm, Sun 16 10am - 5pm, Wed 19 10am - 8pm, Sat 22 10am - 5pm, Sun 23 10am - 5pm

✉ [smith.weston@talktalk.net](mailto:smith.weston@talktalk.net) ☎ 01634 724 683

Wheelchair accessible? No



#### MAP 2

### PETER SMITH

9 Weston Road, Strood, ME2 3EZ

A collection of abstract works which use forms contrasting in colour and texture, to suggest landscape, skyscape or objectscape. The organic quality plays out the visual drama achieved by experiment in the development of the pictorial. They seek to emit an imaginary response in the onlooker.

Sat 15 10am - 5pm, Sun 16 10am - 5pm, Wed 19 10am - 8pm, Sat 22 10am - 5pm, Sun 23 10am - 5pm

✉ [smithpandl9@mail.com](mailto:smithpandl9@mail.com) ☎ 07527 205 702

Wheelchair accessible? No





#### MAP 3

### JACKIE TRINDER

28 Fennel Close, The Esplanade, Rochester, ME1 1LW

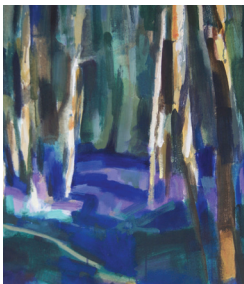
I paint flora, fauna and landscapes and river scenes in watercolour and mixed media, occasionally in oils. I like to experiment with transparent, vibrant colour and work loosely with the paint. I work in my home studio, run small workshops there and also go out to larger art groups.

Sat 15 11am - 6pm, Sun 16 11am - 6pm, Tues 18 5pm - 8pm, Fri 21 11am - 7pm, Sat 22 11am - 7pm, Sun 11am - 7pm

✉ trinderjackie@gmail.com

www.jackietrinder.com ☎ 07714 517 102

Wheelchair accessible? No



#### MAP 4

### SIMON MILLS

10 Borstal Street, ME1 3AH

Recent landscapes on show in the house and in the newly built studio

Sat 15 10am - 5pm, Sun 16 10am - 5pm, Sat 22 10am - 5pm, Sun 23 10am - 5pm

✉ s.mills823@btinternet.com

www.simonmills-artist.co.uk ☎ 07973 515 707

Wheelchair accessible? No



#### MAP 5

### YVONNE WHITNELL

15 St. Matthews Drive, Borstal, Rochester, ME1 3NW

The majority of this semi abstract work is acrylic on canvas, inspired by the environment around us. Echoing the shapes, lines and colours of the natural space in which we live... from beautiful Kent coastlines to the rugged rocks of the Hebrides.

Sat 15 11am - 4pm, Sun 16 11am - 4pm, Mon 17 11am - 4pm, Fri 21 11am - 7pm, Sat 22 11am - 4pm, Sun 23 11am - 4pm

✉ yawhitnell@yahoo.co.uk

Wheelchair accessible? No



#### MAP 6

### TINA BROWN

The Hazelnut Press, 1 Ridley Road, Rochester, ME1 1UL

My work consists of paintings, drawings and prints of my animals, garden and local landscape. My recent work is a series of multi-layer landscape designs. I enjoy using colour and pattern and my work has been described as having lots of life and movement.

Sat 15 11am - 6pm, Sun 16 23 11am - 6pm, Thu 20 11am - 6pm, Fri 21 11am - 6pm, Sat 22 11am - 6pm, Sun 23 11am - 6pm

✉ [tbrownhoney@gmail.com](mailto:tbrownhoney@gmail.com)

☎ 07846 826 715

Wheelchair accessible? No



#### MAP 6

### HEATHER HAYTHORNTWAITE

The Hazelnut Press, 1 Ridley Road, Rochester, ME1 1UL

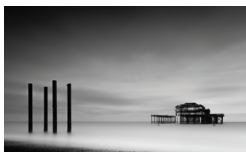
Heather produces handmade limited edition prints at the Hazelnut Press. Print a linocut on one of our 1860's Albion Presses, have a cup of tea, chat to working printmakers. Consider a short course in relief intaglio, or letterpress printmaking where beginners and established artists are welcome. Cards, prints, and paintings for sale.

Sat 15 11am - 6pm, Sun 16 11am - 6pm, Thurs 20 11am - 6pm, Fri 21 11am - 6pm, Sat 22 11am - 6pm, Sun 23 11am - 6pm

✉ [heatherhtt@mac.com](mailto:heatherhtt@mac.com)

[www.hazelnut-press.com](http://www.hazelnut-press.com) ☎ 07702 269 972

Wheelchair accessible? No



#### MAP 7

### RICHARD READER

3 Ridley Road, Rochester, ME1 1UL

Long exposure photographic prints from the UK and Iceland along with a slide show of ongoing work, including street, music and architectural photography. Demonstrations of photographic post-production techniques for monochrome long exposure photography will be given at 13:00 and 15:00 on all days

Sat 15 11am - 4pm, Sun 16 11am - 4pm, Sat 22 11am - 4pm, Sun 23 11am - 4pm

✉ [richardreader@gmail.com](mailto:richardreader@gmail.com)

[www.richardreaderphotography.co.uk](http://www.richardreaderphotography.co.uk) ☎ 07962 077 598

Wheelchair accessible? No



#### MAP 8

### 22 RIDLEY ROAD

22 Ridley Road, Rochester, ME1 1UL

Janice Emmott's drawings, paintings and prints are inspired by natural and human forms. Irene Godfrey's oil and egg tempera paintings and prints are influenced by ecopoetics and a love of place. Printer and visual artist Claire Shackleton is inspired by the natural world, rock formations and wild flora and fauna.

Sat 15 10am - 6pm, Sun 16 10am - 6pm, Mon 17 12pm - 7pm, Tues 18 12pm - 7pm, Wed 19 12pm - 7pm

✉ [jan.emmott@tiscali.co.uk](mailto:jan.emmott@tiscali.co.uk) ☎ 01634 880 419

Wheelchair accessible? No



#### MAP 9

### NIKKI PRICE PHOTOGRAPHY

27 Ridley Road, Rochester, ME1 1UL

Nikki Price has had an open studio (the front room of her Victorian terrace) for MOSAF since the start, never disappointing with quirky and thought provoking photography. As well as exhibiting in MOSAF 2017 her body image series will also be exhibited at Sun Pier House Tea Room September 2017.

Sat 15 11am - 3pm, Sun 16 11am - 3pm, Sat 22 11am - 3pm, Sun 23 11am - 3pm

✉ [nikkipricephotography@gmail.com](mailto:nikkipricephotography@gmail.com)

[www.nikkipphotography.co.uk](http://www.nikkipphotography.co.uk)

Wheelchair accessible? No



#### MAP 10

### ANN PALMER

1 King Edward Road, Rochester, ME1 1UA

Ann Palmer is a landscape painter and urban sketcher working 'en plein air' in oils or pen and ink, in Kent and in Touraine in the Loire Valley. Ann works quickly, resulting in a freshness which is impressionistic yet creates a clarity of subject and defines the mood of the day

Tues 18 11am - 6pm, Wed 19 2pm - 9pm, Thurs 20 11am - 6pm, Fri 11am - 6pm, Sat 22 11am - 6pm, Sun 23 11am - 6pm

✉ [ann.loire@gmail.com](mailto:ann.loire@gmail.com)

[www.artfinder.com/ann-palmer](http://www.artfinder.com/ann-palmer) ☎ 07831 547 811

Wheelchair accessible? No



#### MAP 11

### GUILDHALL MUSEUM

17 High Street, Rochester, ME1 1PY

The Battle of Medway 350th Anniversary, the Guildhall Museum will present a special showing of contemporary prints of the battle and the men who fought in it. The battle took place in June 1667 between the Dutch and English fleets. Interpretative tactile plaques will accompany the exhibition.

Sat 15 10am - 5pm, Sun 16 10am - 5pm, Tues 18 10am - 5pm, Wed 19 10am - 5pm, Thurs 20 10am - 5pm, Fri 21 10am - 5pm, Sat 22 10am - 5pm, Sun 23 10am - 5pm

✉ [guildhall.museum@medway.gov.uk](mailto:guildhall.museum@medway.gov.uk)

[www.guildhallmuseumrochester.co.uk](http://www.guildhallmuseumrochester.co.uk) ☎ 01634 332 900

Wheelchair accessible? No



#### MAP 12

### KENT ASSOCIATION FOR THE BLIND MEDWAY & GRAVESEND ART GROUPS

Rochester Cathedral, Rochester, ME1

Please enjoy this opportunity to view a selection of paintings and sculptures by blind and visually impaired artists from the Kent Association for the Blind Medway and Gravesend Art Groups. Artworks created during the 'Value of Touch' residency at the Guildhall Museum Rochester and the 'Pocahontas 400' commemoration in Gravesend.

Sat 15 10am - 4pm, Sun 16 12pm - 4pm, Mon 17 10am - 4pm, Wed 19 10am - 4pm, Thurs 10am - 4pm, Fri 21 10am - 4pm, Sat 22 10am - 4pm, Sun 23 12pm - 4pm

✉ [mail@wendydaws.co.uk](mailto:mail@wendydaws.co.uk)

[www.facebook.com/kabmedwayartgroup](http://www.facebook.com/kabmedwayartgroup)

☎ 07989 264 768

Wheelchair accessible? Yes



#### MAP 12

### SENSING CULTURE

Rochester Cathedral, Rochester, ME1

An exhibition by people with sight loss, created in workshops at the Beane and Canterbury Cathedral. Participants responded to the stimulus of the buildings and collections with work in 3D. Explore interpretations of Jacob Epstein's Red Dean and other Canterbury favourites. Part of the HLF-funded RNIB project Sensing Culture

Sat 15 10am - 4pm, Sun 16 12pm - 4pm, Mon 17 10am - 4pm, Wed 19 10am - 4pm, Thurs 10am - 4pm, Fri 21 10am - 4pm, Sat 22 10am - 4pm, Sun 23 12pm - 4pm

✉ [mail@wendydaws.co.uk](mailto:mail@wendydaws.co.uk)

<http://canterburymuseums.co.uk/sensing-culture/>

☎ 07989 264 768

Wheelchair accessible? Yes



#### MAP 13

### OF FIRESHIPS & IRON

Rochester Art Gallery & Craft Case, 95 High Street, Rochester, ME1 1LX

New works by Lily Dudley, Laura Dunnage, Heather Haythornthwaite, Xtina Lamb and Adam Newton. Five Medway artists, all pushing the boundaries of contemporary printmaking, received bursaries to create work that explores the location, history and stories of the Dutch Raid, using the Guildhall Museum's collection of historic Dutch prints as inspiration.

Sat 15 10am - 5pm, Sun 16 10:30am - 5pm, Mon 17 10am - 5pm, Tues 18 10am - 5pm, Wed 19 10am - 5pm, Thurs 20 10am - 5pm, Fri 21 10am - 5pm, Sat 22 10am - 5pm, Sun 23 10:30am - 5pm

✉ [arts@medway.gov.uk](mailto:arts@medway.gov.uk)

[www.visitmedway.org/attractions/rochester-art-gallery](http://www.visitmedway.org/attractions/rochester-art-gallery)

☎ 01634 338 319

Wheelchair accessible? Yes



#### MAP 14

### BEN CAMERON

177a High St, Rochester, Kent, ME1 1EH

I've been labelled as the 'creator of the world's saddest doodle', come along and have a look at that and many others from my book *Tragidoodles*. I'll also be exhibiting and selling a wide range of cute and sweet drawings.

Sat 15 11am - 6pm, Sun 16 11am - 6pm, Mon 17 1pm - 6pm,  
Tues 18 1pm - 6pm, Wed 19 1pm - 6pm

✉ [bencameron@me.com](mailto:bencameron@me.com) [www.doodlesbyben.com](http://www.doodlesbyben.com)

☎ 07905 665 565 Wheelchair accessible? No



#### MAP 15

### THE FLIPPIN' FROG

318 High Street, Rochester, ME1 1BT

Newly established micropub actively promoting everything local and independent, from Kentish ales and ciders to locally sourced food. Musicians perform regularly, and the (small) space showcases local artists with exhibitions of prints, paintings and drawings. June's artist is Neil Thorne, a young, talented photographer very involved in local cultural life.

Sat 15 12pm - 11pm, Sun 16 12:30pm - 9pm, Tues 18 12pm - 11pm,  
Wed 19 12pm - 11pm, Thurs 20 12pm - 11pm, Fri 21 12pm - 11pm,  
Sat 22 12pm - 11pm, Sun 23 12:30pm - 9pm

✉ [rochestermicropub@virginmedia.com](mailto:rochestermicropub@virginmedia.com)

[www.facebook.com/theflippinfrog](http://www.facebook.com/theflippinfrog) ☎ 07889 214 000

Wheelchair accessible? No



#### MAP 16

### INTRA

337-341 High Street, Rochester, Kent ME1 1DA

Medway Fine Printmakers - exhibition of hand printed artworks plus open access print studio facilities, Unravel & Unwind - crochet, felting and community crafts studio. Rikard Österlund - C19th style wet plate collodion photography, Seviyor Jewellery - handmade silver jewellery by Sarah King, and Ken Fane - ceramics. All ages activities and demos throughout festival, see website.

Sat 15 11am - 5pm, Sun 16 11am - 5pm, Mon 17 11am - 5pm, Tue 18 11am - 5pm, Wed 19 11am - 9pm, Thu 20 11am - 9pm, Fri 21 11am - 5pm, Sat 22 11am - 5pm, Sun 23 11am - 5pm

✉ [intraarts@gmail.com](mailto:intraarts@gmail.com) [www.intraarts.org](http://www.intraarts.org) ☎ 01634 753299

Wheelchair accessible? Yes



#### MAP 17

### LAURA FISHER

The Tack Room, Hulkes Lane, Rochester, ME1 1EE

This work consists of a series of black and white images taken on my travels around my local area (the Hoo Peninsula) embracing the notion of Love Where You Live.

Sat 15 10am - 5pm, Sun 16 10am - 5pm, Thurs 20 12pm - 8pm, Fri 21 10am - 5pm, Sat 22 10am - 5pm, Sun 23 10am - 5pm

✉ laurafisher007@sky.com

☎ 07751 114 516

Wheelchair accessible? No



#### MAP 17

### JANE PITT

Skylight Studio, The Tack Room, Hulkes Lane, Rochester, ME1 1EE

Jane's work focuses on sound & multi-sensory perception. She creates site-responsive sound, performance and text works in public spaces; on land, water and in moving vehicles. Visit to talk about the local River soundscape & pick up her Listening Guide to join in research for new project 'Bodies of Water'.

Sat 15 12pm - 4pm, Thurs 20 5pm - 8pm, Sun 23 12pm - 4pm

✉ jane@janepitt.co.uk

www.janepitt.co.uk

Wheelchair accessible? No



#### MAP 17

### EMMA GATES

The Shed, The Tack Room, Hulkes Lane, Rochester, ME1 1EE

Although initially this body of work appears to be about men and their opinions, it becomes apparent that the work is about the control, risk and vulnerability of the lone female photographer. All explored against a backdrop of unexpected trust that is formed between artist and models.

Sat 15 10am - 5pm, Sun 16 10am - 5pm, Thurs 20 12pm - 8pm, Fri 21 10am - 5pm, Sat 22 10am - 5pm, Sun 23 10am - 5pm

✉ emma@emmagates.co.uk

www.emmagates.co.uk

Wheelchair accessible? No



#### MAP 17

### LORRI THOMAS

The Tack Room, Hulkes Lane, Rochester, ME1 1EE

Lorri's latest collection of wire birds is inspired by 'family'. Its a celebration of our unique bonds, connections similarities & diversities. Her fun & comical sculptures include lost & found, gathered & discarded embellishments to create a nostalgic fondness to the familiarity we share with our families  
Sat 15 10am - 5pm, Sun 16 10am - 5pm, Thurs 20 12pm - 8pm, Fri 21 10am - 5pm, Sat 22 10am - 5pm, Sun 23 10am - 5pm

✉ [lorri@lorrithomas.com](mailto:lorri@lorrithomas.com)

Wheelchair accessible? No



#### MAP 18

### NEW SAD

The Northern Seaman, 378 High Street, Rochester, ME1 1DJ

A series of bright, irreverent, millennial-punk-pop yellow paintings made by NEW SAD - a medway-born collaboration between artists Adam Newton and Ben Sad. Covering a range of subjects including politics, reality TV, religion and Disney.

Sat 15 12pm - 11pm, Sun 16 12pm - 11pm, Mon 17 4pm - 11pm, Tues 18 4pm - 11pm, Wed 19 4pm - 11pm, Thurs 20 4pm - 11pm, Fri 21 12pm - 11pm, Sat 22 12pm - 11pm, Sun 23 12pm - 11pm

✉ [adam@adamnewtonart.com](mailto:adam@adamnewtonart.com)

[www.bensad.net](http://www.bensad.net) ☎ 07810 464 545

Wheelchair accessible? No



#### MAP 18

### ANDY BREESE

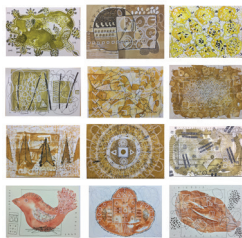
The Northern Seaman, 378 High Street, Rochester, ME1 1DJ

I started running by the river and I noticed the rubbish that washed up. One day I took my kids for a walk and suddenly a discarded battery cap became a robots eye and a shard of glass, a dragon's tooth. The next time I went running I saw the landscape completely differently.

Sat 15 12pm - 11pm, Sun 16 12pm - 11pm, Mon 17 4pm - 11pm, Tues 18 4pm - 11pm, Wed 19 4pm - 11pm, Thurs 20 4pm - 11pm, Fri 21 12pm - 11pm, Sat 22 12pm - 11pm, Sun 23 12pm - 11pm

Wheelchair accessible? Yes





#### MAP 19

### HOPE FITZGERALD

Cafe Moroc, Rochester High Street,

Over 100 days, Colour and mark making have been explored to produce 2 book works and 100 small paintings. Two reference sources were used: The Secret Lives of Coultour by Kassia St Clair and Nomenclature of Colour for Naturalists by Ridgeway.

Sat 15 10am - 3:30pm, Mon 17 10am - 3:30pm, Tues 18 10am - 3:30pm, Wed 19 10am - 3:30pm, Thurs 20 10am - 3:30pm, Fri 21 10am - 3:30pm, Sat 22 10am - 3:30pm

hope@hopefitzgerald.com / www.hopefitzgerald.com / -

Wheelchair accessible? No



#### MAP 20

### THE MESS ROOM

Sun Pier House, Sun Pier, Medway Street, ME4 4HF

Join us in the MESS ROOM and make a memory you can SEE and TOUCH.

15th-16th July MODROC Figures £5 ea. Life Casting experience captures every feature in stunning detail 22nd-23rd July £10 per pint size cup. All materials supplied, artwork ready to take home on the day.

Sat 15 10am - 4pm, Sun 16 10am - 4pm, Sat 22 10am - 4pm, Sun 23 10am - 4pm

✉ mail@wendydaws.co.uk

www.Facebook.com/MessRoomMedway

☎ 07989 264 768

Wheelchair accessible? Yes



#### MAP 20

### WENDY DAWS

The Tack Room, Hulkes Lane, Rochester, ME1 1EE

Another chance to catch elements of Medway, Gravesend and Canterbury blind and visually impaired art group exhibitions and Wendy's 'Enbosu' installation. Offer up your eye for photographing if you'd like to be included in 'You're in here Somewhere'. Step into the Tack Room to find out more.

Sat 15 10am - 5pm, Sun 16 10am - 5pm, Thurs 20 12pm - 8pm, Fri 21 10am - 5pm, Sat 22 10am - 5pm, Sun 23 10am - 5pm

✉ mail@wendydaws.co.uk

www.wendydaws.co.uk ☎ 07989 264 768

Wheelchair accessible? No



#### MAP 20

### RAT'S BAY ARTISTS

Sun Pier House, Sun Pier, Medway Street, ME4 4HF

The Rats Bay Artists at Sun Pier House offer an exciting mix of practices to view. These include drawing, painting, printmaking, mixed media, ceramics, fashion and dressmaking, textiles and sculpture. Work by Rosie Melville, Jocelyn Leigh, Becky Lehmann, Louise Nevett, Laura Mackay, Michael Shaugnessy, Pauline McMullin and Marissa Mardon.

Sat 15 10am - 5pm, Sun 16 10am - 5pm, Sat 22 10am - 5pm,  
Sun 23 10am - 5pm

[jocelyn.leigh1@ntlworld.com](mailto:jocelyn.leigh1@ntlworld.com) / - / 07847 893 030

Wheelchair accessible? No



#### MAP 20

### MOVE AND MAKE

Sun Pier Gallery, Sun Pier House, Sun Pier, Medway Street, ME4 4HF

Move & Make is all about using the arts to connect, create and communicate with other like minded people. We focus on expression, creativity and wellbeing and take part in multi-art form workshops. Please take time to enjoy our group exhibition 'Little Pieces of Me'.

Artworks for sale.

Sat 15 10am - 4pm, Sun 16 12pm - 4pm, Tues 18 10am - 4pm, Wed  
19 10am - 4pm, Thurs 20 10am - 4pm, Fri 21 10am - 4pm, Sat 22  
10am - 4pm, Sun 23 10am - 4pm

[mail@wendydaws.co.uk](mailto:mail@wendydaws.co.uk) / [http://icontheatre.org.uk/take-part/  
projects/move-make/](http://icontheatre.org.uk/take-part/projects/move-make/) / 07989 264 768

Wheelchair accessible? No



#### MAP 21

### SHARON COOPER

Studio 4A, Nucleus Arts Centre, 272 High Street, Chatham, ME4 4BP

'Without a Stitch' Sewn illustrations exploring the 'selfie' and modern female identity. Vintage fabric stitching, prints and cards.

Sat 15 11am - 5pm, Sun 16 11am - 4pm, Wed 19 12pm - 4pm, Sat  
22 11am - 5pm

[www.sacooper.com](http://www.sacooper.com)

Wheelchair accessible? No



#### MAP 21

### LAURA CROSLAND

Studio 15B, Nucleus Arts Centre, 272 Chatham High Street, ME4 5BP

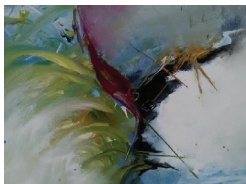
I make wheel thrown, functional pottery for the home, taking inspiration from the natural world, carving floral designs on to my work. Geometric patterns also fascinate me. I also run adult pottery classes from my studio.

Sat 15 10am - 5pm, Sun 16 10am - 5pm, Mon 17 10am - 5pm, Tues 18 10am - 5pm, Wed 19 10am - 5pm, Thurs 20 10am - 5pm, Fri 10am - 5pm, Sat 22 10am - 5pm

✉ [lmc-ceramics@hotmail.co.uk](mailto:lmc-ceramics@hotmail.co.uk)

[www.lauracroslandceramics.com](http://www.lauracroslandceramics.com) ☎ 07952 291 861

Wheelchair accessible? Yes



#### MAP 21

### KIRSTEN HEYDINRYCH

Studio 4C, Nucleus Arts Centre, 272 High Street, Chatham ME4 4BP

A collection of paintings and prints, inspired by my work as an art therapist my work as an art therapist. Works include acrylic painting, oil painting and gelli printing.

Sat 15 10am - 4pm, Sun 16 10am - 4pm, Tues 18 9am - 11am, Fri 21 9am - 11am, 1pm - 3pm, Sat 22 10am - 4pm, Sun 23 10am - 4pm

✉ [lyons.kirsten@googlemail.com](mailto:lyons.kirsten@googlemail.com)

[www.kirstenheydinrych.moonfruit.com](http://www.kirstenheydinrych.moonfruit.com) ☎ 07734 287 604

Wheelchair accessible? No



#### MAP 21

### KERRY-ANN MAXWELL

Studio 11, Nucleus Arts Centre, 272 Chatham High Street, ME4 4BP

Nude Life and still life studies, drawings and acrylic paintings on canvas in post-impressionist style

Sat 15 10am - 6pm, Sat 22 10am - 6pm

✉ [kerryannmaxwell700@yahoo.co.uk](mailto:kerryannmaxwell700@yahoo.co.uk)

☎ 07407 041 250

Wheelchair accessible? No



#### MAP 21

### DEBORAH SMITH

Studio 16A, Nucleus Arts Centre, 272 High Street, Chatham, ME4 4BP

A selection of work in paint, charcoal and pastel - some of which has its beginnings in Life Drawing Classes and the remainder based on plein air sketches.

Sat 15 10am - 4pm, Sun 16 10am - 4pm, Sat 22 10am - 4pm,  
Sun 23 10am - 4pm

✉ [deborahsmith1st@gmail.com](mailto:deborahsmith1st@gmail.com)

[www.facebook.com/DeborahSmithArtist/](http://www.facebook.com/DeborahSmithArtist/) -

Wheelchair accessible? No



#### MAP 21

### SARAH LANGSTONE

Studio 11B, Nucleus Arts Centre, 272 High Street, Chatham, ME4 4BP

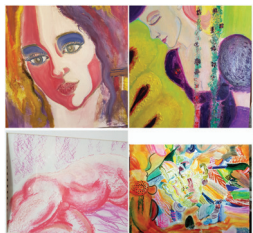
Figurative and Portrait work in oils, acrylics, and mixed media. Also some landscapes and still life and caricature, commissions accepted - price to suit most budgets.

Sat 15 10am - 4pm, Sun 10am - 4pm, Sat 22 10am - 4pm, Sun 23  
10am - 4pm

[www.sarahlangstone.com](http://www.sarahlangstone.com)

☎ 01634 843 298

Wheelchair accessible? No



#### MAP 21

### MAGGIE OSBORN 'OSOARTY'

Studio 3a, Nucleus Arts Centre, 272 Chatham High Street, ME4 4BP

Charcoal, pastel, life studies, oil/mixed media and sculptures

Sat 15 10am - 4pm, Sun 16 10am - 4pm, Sat 22 12pm - 4pm

✉ [maggieosborn@hotmail.co.uk](mailto:maggieosborn@hotmail.co.uk)

[www.facebook.com/osoarty](http://www.facebook.com/osoarty)

☎ 07976 646 066

Wheelchair accessible? No



#### MAP 21

### SOPHIE JONGMAN

Studio 25a, Nucleus Arts Centre, 272 High Street, Chatham, ME4 4BP

Tiffany style glass designs; I also paint in acrylics and pastels particularly enjoying portraiture. I like to combine my interests in science, politics, religion and use these concepts in the creative process.

Mon 17 12pm - 4pm, Tues 18 12pm - 4pm, Wed 19 12pm - 4pm,  
Thurs 20 12pm - 4pm, Fri 21 12pm - 5pm, Sat 22 12pm - 4pm, Sun  
23 12pm - 3pm

✉ [sophiejongman@blueyonder.co.uk](mailto:sophiejongman@blueyonder.co.uk) / [www.sophiejongman.com](http://www.sophiejongman.com)

Wheelchair accessible? No



#### Map 21

### ANNE TAYLOR

Studio 13/ 14B, Nucleus Arts Centre, 272 High Street,  
Chatham, ME4 4BP

Abstract, landscape and figurative paintings. Working in acrylic paint on panel and canvas. Limited giclee prints also available.

Sat 15 10am - 4pm, Sun 16 10am - 4pm, Sat 22 10am - 4pm, Sun 23  
10am - 4pm

✉ [eannetaylor@aol.com](mailto:eannetaylor@aol.com) / [www.facebook.com/annetaylorartist/](http://www.facebook.com/annetaylorartist/)

☎ 07772 329 646

Wheelchair accessible? No



#### MAP 21

### JON GUBBAY

Studio 22A, Nucleus Arts Centre, 272 High Street, Chatham, ME4 4BP

I paint cityscapes and abstracts in acrylic on box canvases. I have been a professional artist for 20 years. My work is shown by two London galleries and locally at the Francis Iles Gallery in Rochester.

Sat 15 11am - 4pm, Tues 18 11am - 4pm, Wed 19 11am - 4pm, Fri 21  
11am - 4pm, Sat 22 11am - 4pm

✉ [jon@jongubbay.com](mailto:jon@jongubbay.com) / [www.jongubbay.com](http://www.jongubbay.com) ☎ 07704 812 027

Wheelchair accessible? No



## MAP 22

### CELIA HYLAND

32 Copperfield Road, Rochester, Kent, ME1 2JB

Celia creates whimsical and vibrant paintings influenced by the beauty and chaos found in nature. In addition to her canvases and prints for sale, she will also be exhibiting her latest pyrography pieces (decorative wood burning). Celia's work will be exhibited alongside the original landscape paintings of Adele Love.

Sat 15 10am - 4pm/ 6pm - 8pm, Sun 16 10am - 4pm/ 6pm - 8pm,  
Wed 19 6pm - 8pm, Thurs 20 6pm - 8pm, Sat 22 10am - 4pm/ 6pm - 8pm,  
Sun 23 10am - 4pm/ 6pm - 8pm

✉ [celiahyland@gmail.com](mailto:celiahyland@gmail.com)

[www.celiahyland.co.uk](http://www.celiahyland.co.uk) ☎ 07970 638 425

Wheelchair accessible? No



## MAP 22

### ADELE LOVE

32 Copperfield Road, Rochester, Kent, ME1 2JB

Adèle's drawings and paintings are inspired by the allotments where she lives. Through subtle layered paintings and bolder work she uses nature's changes to explore themes of transition, change, human relationships and the fragile cycle of life. Adèle will be exhibiting alongside Celia Hyland's original paintings, prints and pyrography.

Sat 15 10am - 4pm/ 6pm - 8pm, Sun 16 10am - 4pm/ 6pm - 8pm,  
Wed 19 6pm - 8pm, Thurs 20 6pm - 8pm, Sat 22 10am - 4pm/ 6pm - 8pm,  
Sun 23 10am - 4pm/ 6pm - 8pm

✉ [adeledrabble@gmail.com](mailto:adeledrabble@gmail.com)

☎ 07759 663 015

Wheelchair accessible? No



#### MAP 23

### GRAHAM I LOCK MA. HS. ARMS

12 Swingate Close, Chatham, ME5 8RH

Contemporary figurative paintings in watercolour, oils and acrylics. Subjects are varied, but many are landscapes and marinescapes and vary in size, when framed, from 6"x4" to 24"x20". A limited range of prints and cards will also be available. Prices for original work from £65.

Thurs 20 7pm - 9pm, Fri 21 10am - 4pm, Sat 22 10am - 4pm,  
Sun 23 10am - 4pm

✉ [art@grahamlock.com](mailto:art@grahamlock.com)

[www.grahamlock.com](http://www.grahamlock.com)

☎ 01634 865 395

Wheelchair accessible? No

## NOTES

# MEDWAY OPEN STUDIOS & ARTS FESTIVAL

## NEXT YEAR!

The 2018 Medway Open Studios Festival will take place on SAT 14 to SUN 22 July!

Registration will open in winter 2017, check the website if you want to take part - [www.medwayopenstudios.co.uk](http://www.medwayopenstudios.co.uk)