

MEDWAY OPEN STUDIOS

& ARTS FESTIVAL
SAT 14 - SUN 22 JULY 2018

www.medwayopenstudios.org

IDEAS TEST

WORKSHOPS, SCREENINGS, PERFORMANCES, EXHIBITIONS, LEARNING

Take the plunge!

This autumn join our community cast in **Take On Me with Dante or Die**, just one of the many creative activities Ideas Test offers across Medway & Swale. For more details contact us on 07713 865955 contact@ideastest.co.uk

Enjoy Your Diving

Please read the Diving Pool Rules & Guidelines:

Please note that the Diving Pool Rules & Guidelines apply to the Medway Diving Pool only.

Swimming Pool Rules & Guidelines apply to the Medway Diving Pool only.

The Diving Pool is suitable for Competent Swimmers only. Please follow the Diving Pool Rules & Guidelines.

No goggles

No running dives

No somersaults

No loose clothing

Please advise the staff of any medical conditions

One lifeguard per pool

When using the steps to enter the pool, please use both hands to hold the steps.

When using the steps to enter the pool, please use both hands to hold the steps.

When using the steps to enter the pool, please use both hands to hold the steps.

When using the steps to enter the pool, please use both hands to hold the steps.

When using the steps to enter the pool, please use both hands to hold the steps.

When using the steps to enter the pool, please use both hands to hold the steps.

When using the steps to enter the pool, please use both hands to hold the steps.

When using the steps to enter the pool, please use both hands to hold the steps.

When using the steps to enter the pool, please use both hands to hold the steps.

When using the steps to enter the pool, please use both hands to hold the steps.

When using the steps to enter the pool, please use both hands to hold the steps.

When using the steps to enter the pool, please use both hands to hold the steps.

When using the steps to enter the pool, please use both hands to hold the steps.

When using the steps to enter the pool, please use both hands to hold the steps.

When using the steps to enter the pool, please use both hands to hold the steps.

When using the steps to enter the pool, please use both hands to hold the steps.

When using the steps to enter the pool, please use both hands to hold the steps.

When using the steps to enter the pool, please use both hands to hold the steps.

When using the steps to enter the pool, please use both hands to hold the steps.

When using the steps to enter the pool, please use both hands to hold the steps.

When using the steps to enter the pool, please use both hands to hold the steps.

When using the steps to enter the pool, please use both hands to hold the steps.

When using the steps to enter the pool, please use both hands to hold the steps.

When using the steps to enter the pool, please use both hands to hold the steps.

When using the steps to enter the pool, please use both hands to hold the steps.

When using the steps to enter the pool, please use both hands to hold the steps.

When using the steps to enter the pool, please use both hands to hold the steps.

When using the steps to enter the pool, please use both hands to hold the steps.

When using the steps to enter the pool, please use both hands to hold the steps.

When using the steps to enter the pool, please use both hands to hold the steps.

When using the steps to enter the pool, please use both hands to hold the steps.

When using the steps to enter the pool, please use both hands to hold the steps.

When using the steps to enter the pool, please use both hands to hold the steps.

When using the steps to enter the pool, please use both hands to hold the steps.

When using the steps to enter the pool, please use both hands to hold the steps.

When using the steps to enter the pool, please use both hands to hold the steps.

When using the steps to enter the pool, please use both hands to hold the steps.

When using the steps to enter the pool, please use both hands to hold the steps.

When using the steps to enter the pool, please use both hands to hold the steps.

When using the steps to enter the pool, please use both hands to hold the steps.

When using the steps to enter the pool, please use both hands to hold the steps.

When using the steps to enter the pool, please use both hands to hold the steps.

When using the steps to enter the pool, please use both hands to hold the steps.

When using the steps to enter the pool, please use both hands to hold the steps.

When using the steps to enter the pool, please use both hands to hold the steps.

When using the steps to enter the pool, please use both hands to hold the steps.

When using the steps to enter the pool, please use both hands to hold the steps.

When using the steps to enter the pool, please use both hands to hold the steps.

When using the steps to enter the pool, please use both hands to hold the steps.

When using the steps to enter the pool, please use both hands to hold the steps.

When using the steps to enter the pool, please use both hands to hold the steps.

When using the steps to enter the pool, please use both hands to hold the steps.

When using the steps to enter the pool, please use both hands to hold the steps.

When using the steps to enter the pool, please use both hands to hold the steps.

When using the steps to enter the pool, please use both hands to hold the steps.

When using the steps to enter the pool, please use both hands to hold the steps.

When using the steps to enter the pool, please use both hands to hold the steps.

When using the steps to enter the pool, please use both hands to hold the steps.

www.ideastest.org.uk



LOTTERY FUNDED

Take On Me by Dante Or Die. Photo c/g Dante Or Die. Coming to Medway in 2018



Supported using public funding by
**ARTS COUNCIL
ENGLAND**



HELLO!

Welcome to the 7th Medway Open Studios & Arts Festival! This year the Festival has 20 different venues to visit with work on show by over 130 artists. From traditional watercolours, printmaking, jewellery, to photography – Medway's artists have it all on offer this July.

This year we're very grateful to have the added support from our sponsors – City of Rochester Society and Ideas Test. And as the founder of the Festival I would like to thank the amazing team of volunteers

who are helping the festival grow year on year – Wendy Daws, Xtina Lamb, Nikki Price, Heather Haythornthwaite, and Alan Smith.

Heather Burgess, Festival Director
heather@medwayopenstudios.co.uk

Share your Festival pictures and experiences with us –

/MedwayOpenStudios
 - @mwayopenstudios

Follow and use our hashtags -
#mosaf2018 #medwayopenstudios

Prize draw!

A simple competition to win £100 to spend with your favourite Medway artist

Visit six or more venues, ask a host artist to sign a box below, then return this page to Medway Open Studios, c/o Sun Pier House, Sun Pier, Medway Street, Chatham, Kent, ME4 4HF. Entries will be entered into a prize draw to win £100 to spend with any artist from the festival. Deadline for entries is 1 August.

Artist/ venue:
Signed:
Artist/ venue:
Signed:
Artist/ venue:
Signed:
Artist/ venue:
Signed:
Artist/ venue:
Signed:
Artist/ venue:
Signed:
Artist/ venue:
Signed:

Your contact details
Name:
Address:
Telephone:
Email:
How did you learn about the Medway Open Studios & Arts Festival?
What did you enjoy the most?

MEDWAY OPEN STUDIOS



THE
CRYPT
ROCHESTER CATHEDRAL

Reborn | Restored | Revealed

Take the steps down into the freshly restored crypt where you will discover a host of hidden treasures

The new café in the Crypt is open Monday to Saturday, 11am – 3pm

www.rochester cathedral.org

Rochester
CATHEDRAL
Growing in Christ since AD604

The Venues!

There are 20 venues taking part in this year's Open Studios. Each venue has its own opening times and access. Please check the listings before visiting and contact the venue in advance if you have any questions.

To view the digital Google Map of all the venues, visit the website www.medwayopenstudios.org

Maps are not to scale and are a guideline only!





MAP 1

HAZEL CHRISTINE

The Copse, 7 Ruggles Close, High Halstow, Rochester, ME3 8RU

I enjoy painting landscapes, seascapes, portraits, printing and sculpture as well as collage using recycled material. My abstract work is created from my subconscious and emotions inspired by every day life, interpreting the world around me using colour and texture, in acrylic, oil, pastels and mixed medium.

	SAT	SUN	MON	TUE	WED	THU	FRI	SAT	SUN
FROM	10am	11am	X	11am	11am	11am	11am	10am	11am
UNTIL	6pm	4pm	X	4pm	4pm	8pm	8pm	6pm	4pm

✉ art.hazelchristine@btinternet.com ☎ 07989 808 483

fb @hcart123 &no



MAP 2

LINDA J SMITH

9 Weston Road, Strood, ME2 3EZ

Drawings from landscapes form the basis of my paintings. Colour, tone and texture follow with various techniques. The finished work is often the result of over drawing and the use of mixed media to satisfy the balance of the composition.

	SAT	SUN	MON	TUE	WED	THU	FRI	SAT	SUN
FROM	10am	10am	X	X	10am	X	X	10am	10am
UNTIL	5pm	5pm	X	X	8pm	X	X	5pm	5pm

✉ smith.weston@talktalk.net ☎ 07721 732 220 &no



MAP 2

PETER SMITH

9 Weston Road, Strood, ME2 3EZ

A collection of coloured abstract works based around visits to places, usually coastal, which influence and inspire a response in personal terms.

A continuation of previous shows in the open studios with accent on change and experiment to open up new ideas.

	SAT	SUN	MON	TUE	WED	THU	FRI	SAT	SUN
FROM	10am	10am	X	X	10am	X	X	10am	10am
UNTIL	5pm	5pm	X	X	8pm	X	X	5pm	5pm

✉ smith.weston@talktalk.net ☎ 07527205702 &no



MAP 3

BRONACH RAE

10 Borstal Street, Rochester, ME1 3AH

I am a collage artist creating works from photographs of the natural environment. Using the photographs taken, I deconstruct images to create a new, and sometimes challenging view of nature. I consider more unusual aspects of nature and landscape my subject matter, manipulating scale and dimension to suit my purpose.

	SAT	SUN	MON	TUE	WED	THU	FRI	SAT	SUN
FROM	10am	10am	X	X	X	X	X	10am	10am
UNTIL	6pm	6pm	X	X	X	X	X	6pm	6pm

✉ bronachrae@googlemail.com ☎ 07743162901

fb bronach.rae @dronackqueenoftheuniverse &no



MAP 3

SIMON MILLS

10 Borstal Street, ME1 3AH

Recent landscapes and townscapes of Medway and further afield.

	SAT	SUN	MON	TUE	WED	THU	FRI	SAT	SUN
FROM	10am	10am	X	X	X	X	X	10am	10am
UNTIL	6pm	6pm	X	X	X	X	X	6pm	6pm

✉ s.mills823@btinternet.com ☎ 07973515707 &no

fb simonmillsartist www.simonmills-artist.co.uk

@simon_mills_artist



MAP 4

YVONNE WHITNELL

15 St. Matthews Drive, Borstal, Rochester, ME1 3NW

Inspired by the natural world, Yvonne uses acrylic on canvas to create semi-abstract works which are an exploration of colour, shape and texture. Reflecting the stunning British landscape to form uniquely creative expressions of serene tranquillity. This dramatic collection is a colourful journey of light, form and emotion.

	SAT	SUN	MON	TUE	WED	THU	FRI	SAT	SUN
FROM	11am	11am	11am	X	11am	X	11am	11am	11am
UNTIL	5pm	5pm	7pm	X	5pm	X	7pm	5pm	5pm

✉ yawhitnell@yahoo.co.uk ☎ 07977419820 &no



MAP 5

JACKIE TRINDER

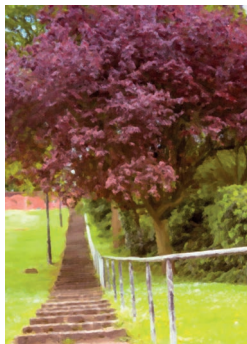
28 Fennel Close, The Esplanade, Rochester, ME1 1LW

I paint flora, fauna and landscapes and river scenes in watercolour and mixed media, occasionally in oils. I like to experiment with transparent, vibrant colour and work loosely with the paint. I work in my home studio, run small workshops there and also go out to larger art groups.

	SAT	SUN	MON	TUE	WED	THU	FRI	SAT	SUN
FROM	11am	11am	X	X	11am	X	11am	11am	11am
UNTIL	6pm	6pm	X	X	6pm	X	6pm	6pm	6pm

✉ trinderjackie@gmail.com ☎ 07714517102 📍 NO

📱 jacqueline.trinder.5 www.jackietrinder.com



MAP 6

ZAHRA MAJID

13 Sealand Court, Esplanade, Rochester, ME1 1QH

A fresh perspective and appreciation of British landscape, cityscape, flora & fauna with contemporary photography modified to appear as watercolour and oil paintings. Zahra's favourite from her own works are her photographs of British transportation systems, as well as some gorgeous Kent landscapes.

	SAT	SUN	MON	TUE	WED	THU	FRI	SAT	SUN
FROM	4pm	12pm	8am	X	4pm	8am	11am	X	X
UNTIL	7pm	7pm	8pm	X	8pm	8pm	6pm	X	X

✉ Zahramajidphotography@hotmail.com ☎ 07960747342

📱 photoartbyzahra 📱 artimpressionsbyzahramajid 📍 NO

www.zahra-majid.fineartamerica.com



MAP 7

LIZ HOWE

The Hazelnut Press, 1 Ridley Road, Rochester, ME1 1UL

The three methods I use in my art work are painting, printing and collage. My work is bright and very colourful. The paintings are abstract and develop during the actual painting process. The prints are very varied and the collages are fun, surreal and political.

	SAT	SUN	MON	TUE	WED	THU	FRI	SAT	SUN
FROM	12am	12am	X	X	X	X	4pm	12am	12am
UNTIL	6pm	6pm	X	X	X	X	8pm	6pm	6pm

✉ lizhowe@blueyonder.co.uk ☎ 07906 738165

www.lizow.com 📍 NO



MAP 7

PAT LOCK

The Hazelnut Press, 1 Ridley Road, Rochester, ME1 1UL

I work in two contrasting styles and mediums. The first is traditional icons using ground pigments mixed with egg yolk; the second is printing from linocuts. This work is based on shape and line allowing a pattern of positive and negatives to emerge.

	SAT	SUN	MON	TUE	WED	THU	FRI	SAT	SUN
FROM	12pm	12pm	X	X	X	X	4pm	12pm	12pm
UNTIL	6pm	6pm	X	X	X	X	8pm	6pm	6pm

✉ lock_graham@hotmail.com ☎ 01634 865395

www.hazelnut-press.com/pat-lock 📍 NO



MAP 7

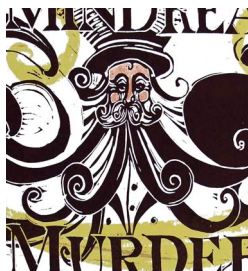
GLORIA HOLDEN

The Hazelnut Press, 1 Ridley Road, Rochester, ME1 1UL

In my recent work I concentrate largely on layered landscapes and natural forms. Favoured techniques include etching, collagraph, print collage and painting with acrylics.

	SAT	SUN	MON	TUE	WED	THU	FRI	SAT	SUN
FROM	12pm	12pm	X	X	X	X	4pm	12pm	12pm
UNTIL	6pm	6pm	X	X	X	X	8pm	6pm	6pm

✉ gloriasholden@yahoo.co.uk www.gloriaholden-art.com 📍 NO



MAP 7

THE HAZELNUT PRESS

The Hazelnut Press, 1 Ridley Road, Rochester, ME1 1UL

Drawings, paintings, and unusual proof prints will be available, also editioned prints and cards. Print using our latest press, an 1840 Albion - so big that we cut a ceiling hole for the top! Chat about courses in traditional, hybrid printmaking or letterpress. Beginners and established artists are welcome.

	SAT	SUN	MON	TUE	WED	THU	FRI	SAT	SUN
FROM	12pm	12pm	X	X	X	X	4pm	12pm	12pm
UNTIL	6pm	6pm	X	X	X	X	8pm	6pm	6pm

✉ info@hazelnut-press.com ☎ 07702269972

📱 Heather Haythornthwaite 📱 heather.haythornthwaite

www.hazelnut-press.com 📍 NO



MAP 7

SEVIYOR JEWELLERY

The Hazelnut Press, 1 Ridley Road, Rochester, ME1 1UL

Seviyor Jewellery comprises a collection of silver and mixed media jewellery, designed and made by hand. Silver will always take centre stage alongside textile, yarn and luxury leather. On show will be a carefully chosen selection of easy to wear items and some one of a kind pieces.

	SAT	SUN	MON	TUE	WED	THU	FRI	SAT	SUN
FROM	12pm	12pm	X	X	X	X	4pm	12pm	12pm
UNTIL	6pm	6pm	X	X	X	X	8pm	6pm	6pm

✉ Seviyorjewellery@gmail.com ☎ 07738052250

Facebook Seviyorjewellery Instagram Seviyorjewellery 🚫NO



MAP 7

TINA BROWN

The Hazelnut Press, 1 Ridley Road, Rochester, ME1 1UL

My work is a mixture of watercolour paintings and relief Lino Prints. My paintings are often very detailed, whilst my prints focus on line and texture. My work includes a mixture of local landscapes with an industrial edge, animals and still life studies.

	SAT	SUN	MON	TUE	WED	THU	FRI	SAT	SUN
FROM	12pm	12pm	X	X	X	X	4pm	12pm	12pm
UNTIL	6pm	6pm	X	X	X	X	8pm	6pm	6pm

✉ tbrownhoney@gmail.com ☎ 07846826715 🚫NO



MAP 8

NIKKI PRICE PHOTOGRAPHY

27 Ridley Road, Rochester, ME1 1UL

This year, Nikki's work is inspired by her research into loss, memory and family stories.

	SAT	SUN	MON	TUE	WED	THU	FRI	SAT	SUN
FROM	12pm	12pm	X	X	X	X	X	12pm	12pm
UNTIL	5pm	4pm	X	X	X	X	X	5pm	4pm

✉ nikkipricephotography@gmail.com 🚫NO

Instagram nikki_price_photography www.nikkiphotography.co.uk

Facebook NikkiPricePhotography Twitter nikkiphot



MAP 9

JULIA SCANLON

28 Langdon Road, Rochester, ME1 1UN

Julia's work is focussed on moody large scale landscapes and abstract photography.

	SAT	SUN	MON	TUE	WED	THU	FRI	SAT	SUN
FROM	12pm	10.30pm	X	X	X	X	11am	12pm	10.30pm
UNTIL	5pm	12.30pm	X	X	X	X	3pm	5pm	12.30pm

www.julia-scanlon.com 🚫NO



MAP 10

ANN PALMER

1 King Edward Road, Rochester, ME1 1UA

Ann is a land and seascape painter and urban sketcher working mostly 'en plein air' locally and in France. She works quickly, resulting in a freshness which is impressionistic yet creates a clarity of subject and defines the mood of the day. Meet Ann and buy paintings, drawings, cards and prints.

	SAT	SUN	MON	TUE	WED	THU	FRI	SAT	SUN
FROM	9am	10pm	11am	10am	10am	11am	12pm	9am	9am
UNTIL	11am	6pm	6pm	6pm	12pm	6pm	6pm	6pm	6pm

✉ ann.loire@gmail.com ☎ 07831 547811 🚫NO

www.artfinder.com/ann-palmer# Facebook annattaticstudio Twitter annattatic



MAP 11

SENSING CULTURE

Rochester Cathedral, Boley Hill, Rochester, ME1 1SX

The Power of the Object: A group show by people with sight loss, inspired by the collections and textures at The Beane House of Art & Knowledge, Canterbury. Part of the HLF-funded RNIB project Sensing Culture.

	SAT	SUN	MON	TUE	WED	THU	FRI	SAT **	SUN
FROM	X	12pm	10am	10am	10am	10am	10pm	10am	12pm
UNTIL	X	4pm	4pm	4pm	4pm	4pm	4pm	4pm	4pm

** entry via side Engineers door

✉ mail@wendydaws.uk.uk ☎ 07989264768 🚫YES

www.canterburymuseums.co.uk/sensing-culture



MAP 11

KENT ASSOCIATION FOR THE BLIND MEDWAY ART GROUP

Rochester Cathedral, Boley Hill, Rochester, ME1 1SX

Cathedral: a selection of 2D and 3D artworks created by artists with sight loss from the Kent Association for the Blind Medway Art Group. The art exhibited is inspired by the magnificent Rochester Cathedral. Cathedral Crypt exhibition open until 30th August.

	SAT	SUN	MON	TUE	WED	THU	FRI	SAT **	SUN
FROM	X	12pm	10am	10am	10am	10am	10pm	10am	12pm
UNTIL	X	4pm	4pm	4pm	4pm	4pm	4pm	4pm	4pm

** entry via side Engineers door

✉ mail@wendydaws.uk.uk ☎ 07989264768 ♿YES

📱 kabmedwayartgroup www.kabmedwayartgroup.wordpress.com



MAP 11

KENT ASSOCIATION FOR THE BLIND GRAVESEND ART GROUP

Rochester Cathedral, Boley Hill, Rochester, ME1 1SX

River: an exhibition of artwork inspired by the river created by artists with sight loss from the Kent Association for the Blind Gravesend Art Group. The group worked from the St Andrew's Art Centre, Gravesend in collaboration with LV21 and Xtina Lamb. Cathedral Crypt exhibition open until 30th August.

	SAT	SUN	MON	TUE	WED	THU	FRI	SAT **	SUN
FROM	X	12pm	10am	10am	10am	10am	10pm	10am	12pm
UNTIL	X	4pm	4pm	4pm	4pm	4pm	4pm	4pm	4pm

** entry via side Engineers door

✉ mail@wendydaws.uk.uk ☎ 07989264768 ♿YES

📱 kabgravesendartgroup
www.kabmedwayartgroup.wordpress.com



MAP 12

CREATIVE DESTRUCTION: VOLCANOES INSPIRING ART & SCIENCE

Rochester Art Gallery, Medway Visitor Information Centre,
95 High St, Rochester, ME1 1LX

Prints and drawings by Emma Stibbon RA shown alongside volcanic research and film by Professor Stephen Sparks FRS and Professor Katharine Cashman FRS. An exciting collaboration combining their shared fascination with volcanoes, volcanic landscapes, processes, and impact. Shown with kind permission of The Verrey Gallery, Eton College. On display until 27 August.

	SAT	SUN	MON	TUE	WED	THU	FRI	SAT	SUN
FROM	10am	11am	10am	10am	10am	10am	10pm	10am	11am
UNTIL	5pm	4pm	5pm	5pm	5pm	5pm	5pm	5pm	4pm

✉ arts@medway.gov.uk ☎ 01634 338319 ♿YES

📱 Rochester-Art-Gallery-Craft-Case-304928416283207

www.visitmedway.org/rochester-art-gallery-and-craft-case



MAP 13

ADELE LOVE

The Moat House Coffee Shop, 8 Crow Lane, Rochester, ME1 1RF

For Adele, painting is a way to lose and find herself. Memories of drawing directly from nature and allotments are translated onto her canvases and prints through the spontaneous and intuitive act of painting. Adele is exhibiting alongside Celia Hyland again this year. Originals, prints and cards for sale.

	SAT	SUN	MON	TUE	WED	THU	FRI	SAT	SUN
FROM	10:30-3pm/	12	10am	10am	10am	10am	11am	10:30-3pm/	12
UNTIL	6-8pm	4pm	3pm	3pm	3pm	3pm	3pm	6-8pm	4pm

✉ adeleloveart@gmail.com ☎ 07759 663015 ♿YES



MAP 13

CELIA HYLAND

The Moat House Coffee Shop, 8 Crow Lane, Rochester, ME1 1RF

Mixed-media artist Celia creates vibrant paintings and layered textile pieces using embroidery and remnants of cloth. Influenced by the beauty and chaos of nature, the work is quirky and whimsical. Celia has also produced a number of illustrations and is exhibiting alongside Adele Love. Originals, prints and cards for sale.

	SAT	SUN	MON	TUE	WED	THU	FRI	SAT	SUN
FROM	10:30-3pm/	12	10am	10am	10am	10am	10am	10:30-3pm/	12
UNTIL	6-8pm	4pm	3pm	3pm	3pm	3pm	3pm	6-8pm	4pm

✉ celiahylant@gmail.com ☎ 07970 638425 ♿YES

www.celiahylant.co.uk @celiahylant 📱 celiahylantartist



MAP 14

ART FOR MENTAL HEALTH, MEDWAY COUNCIL

Pausenbrot Cafe, Bellerophon House, Doust Way, Rochester, ME1 1FG

Our work focuses on Home and what it means to us. We have concluded that HOME is not only about a building. The home protects us, gives us a sense of belonging, and allows us to focus on memories that are hidden and remain even when it ceases to exist.

	SAT	SUN	MON	TUE	WED	THU	FRI	SAT	SUN
FROM	10am	X	9am	9am	9am	9am	9pm	10am	X
UNTIL	4pm	X	4pm	4pm	4pm	4pm	4pm	4pm	X

🚶 YES



MAP 15

ADAM HANSON

Little Roc Cafe, 335 High Street, Rochester, ME1 1JR

My work has shifted towards a more painterly form of abstraction concentrating on the relationship between colour form and mark making. This way of working allows me much creative freedom. Work begins intuitively, a reaction to other 'events' on the canvas as they play out.

	SAT	SUN	MON	TUE	WED	THU	FRI	SAT	SUN
FROM	10am	10am	10am	10am	10am	10am	10am	10am	10am
UNTIL	8pm	8pm	6pm	6pm	6pm	6pm	8pm	8pm	8pm

✉ hansonadam@hotmail.co.uk ☎ 07368297405

🚶 YES Ground floor only



MAP 16

INTRA

INTRA, 337-341 High Street, Rochester, ME1 1DA

Group exhibition of prints including: linocut, collagraph, silkscreen, etching, Risograph, monoprints and textiles by Medway Fine Printmakers. Open access print studio facilities, community crafts studio Unravel & Unwind, glass artworks from Karen Verma's GlassMania groups, and a new cowering space. Drop-in creative activities and demos for all ages.

	SAT	SUN	MON	TUE	WED	THU	FRI	SAT	SUN
FROM	11am	11am	11am	X	11am	11am	X	11am	11am
UNTIL	5pm	5pm	5pm	X	8pm	5pm	X	5pm	5pm

✉ intraarts@gmail.com ☎ 01634 753299 📱 intraarts

www.intraarts.org 🐦 intraarts 📺 intra_arts

🚶 YES 2nd step at entrance, ramp available



MAP 17

DARRYL RYAN HARTLEY

The Tack Room, Hulkes Lane, Rochester, ME1 1EE

Inspired by cult filmmakers, Darryl creates paintings that take specific characters and themes from their movies, and adds a twist to either capture a defining moment, or to create a composition that encapsulates a character's personality and motives.

	SAT	SUN	MON	TUE	WED	THU	FRI	SAT	SUN
FROM	10am	11am	X	X	X	3pm	11am	10am	11am
UNTIL	6pm	5pm	X	X	X	7pm	9pm	6pm	5pm

✉ darrylh@blueyonder.co.uk 📺 @darrylhartleyart 🚶 NO



MAP 17

'MATERIAL CONVERSATIONS'

The Tack Room, Hulkes Lane, Rochester, ME1 1EE

'Material Conversations' by Matt and Wendy. A collaboration between a painter and a maker, with interesting results. Initially commissioned by Ideas Test, the pair sat, stared and drew each other. You can view the work on its second outing while its still young, made from latex it will slowly fall apart.

	SAT	SUN	MON	TUE	WED	THU	FRI	SAT	SUN
FROM	10am	11am	X	X	X	3pm	11am	10am	11am
UNTIL	6pm	5pm	X	X	X	7pm	9pm	6pm	5pm

✉ mail@wendydaws.co.uk www.wendydaws.co.uk

📺 @wendydaws 🐦 @wendydaws 🚶 NO



MAP 17

LAURA FISHER

The Tack Room, Hulkes Lane, Rochester, ME1 1EE

This body of work consists of a series of black and white postcard images telling the story of the people of Medway through the street names.

	SAT	SUN	MON	TUE	WED	THU	FRI	SAT	SUN
FROM	10am	11am	X	X	X	3pm	11am	10am	11am
UNTIL	6pm	5pm	X	X	X	7pm	9pm	6pm	5pm

✉ laurafisher007@sky.com ☎ 07751114516 📺 @LFisherfoto

📺 laurafisherfoto 🐦 @laurafisher007 🚶 NO



MAP 17

ROSIE MELVILLE

The Tack Room, Hulkes Lane, Rochester, ME1 1EE

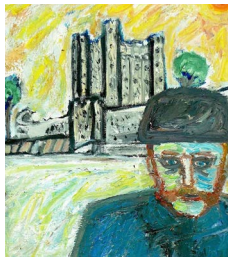
Physical and mental health are central to Rosie's practice, along with her passion for natural history collections and curiosities. It is a careful, understated use of materials that stimulates curiosity in the viewer, causing them to question what they see. Rosie's current work is in found materials, ceramics and crochet.

	SAT	SUN	MON	TUE	WED	THU	FRI	SAT	SUN
FROM	10am	11am	X	X	X	3pm	11am	10am	11am
UNTIL	6pm	5pm	X	X	X	7pm	9pm	6pm	5pm

✉ rosie.melville@hotmail.co.uk ☎ 07817633651 🚫NO

📱 @rosiemelvillefineart www.rosiemelville.com

🐦 @rosie_melville 📺 @rosiemelvillefineart



MAP 17

WOLF HOWARD

The Tack Room, Hulkes Lane, Rochester, ME1 1EE

Wolf Howard will be showing self-made short films and selling decorated flints, pastel drawings, pinhole photography and his latest poetry book.

	SAT	SUN	MON	TUE	WED	THU	FRI	SAT	SUN
FROM	10am	11am	X	X	X	3pm	11am	10am	11am
UNTIL	6pm	5pm	X	X	X	7pm	9pm	6pm	5pm

☎ 07582 653788 www.wolfhoward.com 🚫NO



MAP 18

ANDY BREESE

The Northern Seaman, 378 High Street, Rochester, ME1 1DJ

A collection of found art and printed material accompanied with free-written text extracts from the memoir 'LimboLand'

	SAT	SUN	MON	TUE	WED	THU	FRI	SAT	SUN
FROM	12pm	2pm	4pm	4pm	4pm	4pm	12pm	12pm	2pm
UNTIL	11pm	9pm	11pm	11pm	11pm	11pm	11pm	11pm	9pm

✉ breeseofkent@gmail.com ☎ 07813072293 🚫YES

📱 we.are.type



MAP 18

NEW SAD

The Northern Seaman, 378 High Street, Rochester, ME1 1DJ

Midway-born millennial art-scum collaboration NEW SAD is an ongoing partnership between Adam Newton and Ben Sad. Bright, brash, graphic paintings and prints exploring themes of religion, politics, suffering and pop culture. Some offensive material likely.

	SAT	SUN	MON	TUE	WED	THU	FRI	SAT	SUN
FROM	12pm	2pm	4pm	4pm	4pm	4pm	12pm	12pm	2pm
UNTIL	11pm	9pm	11pm	11pm	11pm	11pm	11pm	11pm	9pm

✉ adam@adamnewtonart.com ☎ 07810464545 🚫YES

📱 newasadpress



MAP 19

LORRI THOMAS

The Tea Room, 2nd Floor, Sun Pier House, Chatham, ME4 4HF

This year Lorri will be showing quirky 'Creatures with Personality' made from found & upcycled materials.

	SAT	SUN	MON	TUE	WED	THU	FRI	SAT	SUN
FROM	10am	12pm	X	10am	10am	10am	10am	10am	12pm
UNTIL	4pm	4pm	X	4pm	4pm	4pm	4pm	4pm	4pm

✉ Lorri@lorrithomas.com ☎ 07751114516 🚫NO

www.lorrithomas.com 📱 Purplelorri 🐦 Lorri@thetessystudio



MAP 19

MONA TABBICCA

Studio 8, Ground Floor, Sun Pier House, Chatham, ME4 4HF

Sculptural jewellery, contemporary in design yet timeless unisex pieces that evoke confidence, strong personality and wearer's individuality.

	SAT	SUN	MON	TUE	WED	THU	FRI	SAT	SUN
FROM	12pm	1pm	11am	1am	1am	11am	1am	12pm	1pm
UNTIL	4pm	4pm	4pm	4pm	4pm	4pm	4pm	4pm	4pm

✉ metcreatives@gmail.com ☎ 07954 572 756 🚫YES

📱 metcreatives



MAP 19

ZARA CARPENTER

The Tea Room, 2nd Floor, Sun Pier House, Chatham ME4 4HF

A series of experiments using photography, print and collage.

	SAT	SUN	MON	TUE	WED	THU	FRI	SAT	SUN
FROM	10am	12pm	X	10am	10am	10am	10am	10am	12pm
UNTIL	4pm	4pm	X	4pm	4pm	4pm	4pm	4pm	4pm

✉ zaracarpenter@gmail.com www.zaracarpenter.com ♿ NO

🐦 [zaracarpenter](#) 📷 [zaracarpenter](#)



MAP 19

MARISSA MARDON

Studio 9, Ground Floor, Sun Pier House, Chatham, ME4 4HF

Marissa works in a mixture of styles, from muted monochrome photographic to brightly coloured abstracts in acrylics and oils. On show will be works in progress which will give you the opportunity to see how Marissa develops her ideas and how they appear on canvas.

	SAT	SUN	MON	TUE	WED	THU	FRI	SAT	SUN
FROM	X	10am	X	X	X	X	X	10am	10am
UNTIL	X	5pm	X	X	X	X	X	5pm	5pm

✉ marissamardon@gmail.com ☎ 07974768830 ♿ YES

📱 [MarissaMardonArtist](#) www.marissamardon.com

👤 Marissa Mardon 🐦 [Marissa Mardon](#)



MAP 19

JOHN OLIVER AND THE MEDWAY (BOOK PROJECT)

The Gallery, 2nd Floor, Sun Pier House, Chatham, ME4 4HF

Deriving from a book project about John Oliver (artist and tug man on the Medway, who was born without hands), author Frances Beaumont has gathered together 7 exceptional artists who were friends of John Oliver or have strong links with the Medway, for this lively, colourful and varied exhibition.

	SAT	SUN	MON	TUE	WED	THU	FRI	SAT	SUN
FROM	10am	1pm	X	10am	10am	10am	10am	10am	1pm
UNTIL	5pm	4pm	X	4pm	4pm	4pm	4pm	4pm	4pm

✉ francesbeaumont@gmail.com ☎ 01795531998

📱 [ojoliverbook.org](#) www.francesbeaumont.co.uk ♿ NO

👤 FrancesBeaumont



MAP 19

PEER ARTS GROUP

The Mess Room, Ground Floor, Sun Pier House, Chatham, ME4 4HF

Peer Arts, we're a group of artists who meet regularly at the Mess Room to create, explore and support each other in our artistic endeavours. Please enjoy our mixed media exhibition.

	SAT	SUN	MON	TUE	WED	THU	FRI	SAT	SUN
FROM	10am	10am	X	X	X	X	X	10am	10am
UNTIL	5pm	5pm	X	X	X	X	X	5pm	5pm

✉ mail@wendydaws.uk.uk ☎ 07989264768 ♿ YES

📱 [MessRoomMedway](#) www.messroom.org

👤 [messroommedway](#) 🐦 [@MessRoomMedway](#)



MAP 19

THE MESS ROOM

The Mess Room, Ground Floor, Sun Pier House, Chatham, ME4 4HF

Join Christopher Sacre in the MESS ROOM and make a memory you can SEE and TOUCH. Christopher will show you step by step how to make your own MODROC Sculpture. £5 each. All materials supplied, artwork ready to take home on the day.

	SAT	SUN	MON	TUE	WED	THU	FRI	SAT	SUN
FROM	10am	10am	X	X	X	X	X	10am	10am
UNTIL	3.30pm	3.30pm	X	X	X	X	X	3.30pm	3.30pm

✉ mail@messroom.org.uk ☎ 07989264768 ♿ YES

📱 [MessRoomMedway](#) www.messroom.org 📷 [messroommedway](#)

🐦 [@MessRoomMedway](#)



MAP 19

RATS BAY ARTISTS

Studios 2 - 7, 1st Floor, Sun Pier House, Chatham, ME4 4HF

The Rat's Bay Artists at Sun Pier offer an exciting array of practices. These include drawing, painting, mixed media, printmaking, sculpture and animation. Visit the studios of Richard Curtis, Peter Collins, Pauline McMullin, Louise Nevett and Michael Shaughnessy.

	SAT	SUN	MON	TUE	WED	THU	FRI	SAT	SUN
FROM	10am	10am	X	X	X	X	X	10am	10am
UNTIL	5pm	5pm	X	X	X	X	X	5pm	5pm

✉ louise_nevett7@btinternet.com ☎ 07768140578 ♿ NO

Nucleus Arts Centre

THE GARDEN ARTS CENTRE IN THE HEART OF CHATHAM

Gallery • Café • Studios
272 High St, Chatham ME4 4BP



01634 812108
www.nucleusarts.com

The Halpern Charitable Foundation Registered Charity no. 1096478

MAP 20

NUCLEUS ARTISTS

Nucleus Arts Centre, 272 High Street, Chatham, ME4 4BP

Painting, sculpture, textiles, ceramics, photography – all in one venue with a gallery and café. Artists include Aisha Young, Angela Lyon, Ann Palmer, Anne Taylor, Deborah Smith, Esther Johnson, Freddie Topps, Jon Gubbay, Kerry Maxwell, Holly Chadd, Laura Crosland, Maggie Osborn, Margaret Shepherd, Michael Daks, Sharon Cooper, Sian Bostwick, Sofia MacMullen, Tanya Outen, Tom Wynn-Owens and Sophie Jongman.

	SAT	SUN	MON	TUE	WED	THU	FRI	SAT	SUN
FROM	11am	11am	X	X	X	X	X	11am	X
UNTIL	5pm	4pm	X	X	X	X	X	5pm	X



MAP 21

MEERA AHAMED

39 Chipstead Road, Parkwood, Gillingham, ME8 9SQ

Vibrant yet subtle paintings inspired by nature, translucency and glow. Displayed in Meera's home studio, the collection includes country-themed still life, animals, plants, oil & watercolour paintings. Her black & white doodles fuse henna art and Zentangle. Meera runs art classes and takes commissions. Try your hand at coffee/beetroot painting! Henna tattoos available.

	SAT	SUN	MON	TUE	WED	THU	FRI	SAT	SUN
FROM	11am	11am	11am	11am	11am	11am	X	X	X
UNTIL	6pm	6pm	6pm	6pm	6pm	6pm	X	X	X

✉ pakmeera@hotmail.com ☎ 07939005598 📍

📱 [meeraahamedartist](https://www.instagram.com/meeraahamedartist)



THE CITY OF ROCHESTER SOCIETY

**THE CITY OF ROCHESTER SOCIETY IS
DELIGHTED & PROUD TO SPONSOR MEDWAY
OPEN STUDIOS & ARTS FESTIVAL**

It's a natural partnership. For 50 years we've been working hard to preserve the past, protect the future and improve the environment and quality of life of this city we love (whenever

possible promoting local photographers and artists). And Medway Open Studios is a brilliant, innovative showcase for the best of the area's creative artists and craftspeople. A perfect match.

Join us and help make sure Rochester continues to flourish.
www.city-of-rochester.org.uk



info@city-of-rochester.org.uk